



INSTRUCTION BULLETIN

No. 9014058
Machine: S20E
Published: 12-2015
Rev. 02

NOTE: DO NOT DISCARD the Parts List from the Instruction Bulletin. Place the Parts List in the appropriate place in the machine manual for future reference. Retaining the Parts List will make it easier to reorder individual parts and will save the cost of ordering an entire kit.

NOTE: Numbers in parenthesis () are reference numbers for parts listed in Bill of Materials.

Installation instructions for **kit number 9014036**

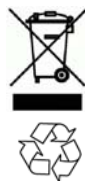
SYNOPSIS:

This kit contains the parts needed to install a telemetry kit on S20E sweepers.
Please follow step-by-step instructions.

SPECIAL TOOLS / CONSIDERATIONS: NONE

(Estimated time to complete: 1 hour)

The IRIS (telemetry module) must be activated to complete this installation. The module will not function until it is activated. Call for assistance (North America - Technical Support / Australia - CCC) activating the module after all telemetry components have been installed. Have machine serial number and IRIS module SIM number (located on back of IRIS control box assembly) ready when calling for activation.



PROTECT THE ENVIRONMENT

Please dispose of packaging materials, used machine components such as batteries and fluids in an environmentally safe way according to local waste disposal regulations.

Always remember to recycle.

PREPARATION:

1. Confirm the hour meter is properly wired and functional. The hour meter must be fully functional and properly wired before the IRIS system can be installed.
2. Evaluate the condition of batteries, cables, and terminal connections. Batteries / cables / terminal connections must all be in safe working condition.

FOR SAFETY: Before leaving or servicing machine, stop on level surface, turn off machine, set parking brake, and remove key.

INSTALLATION:

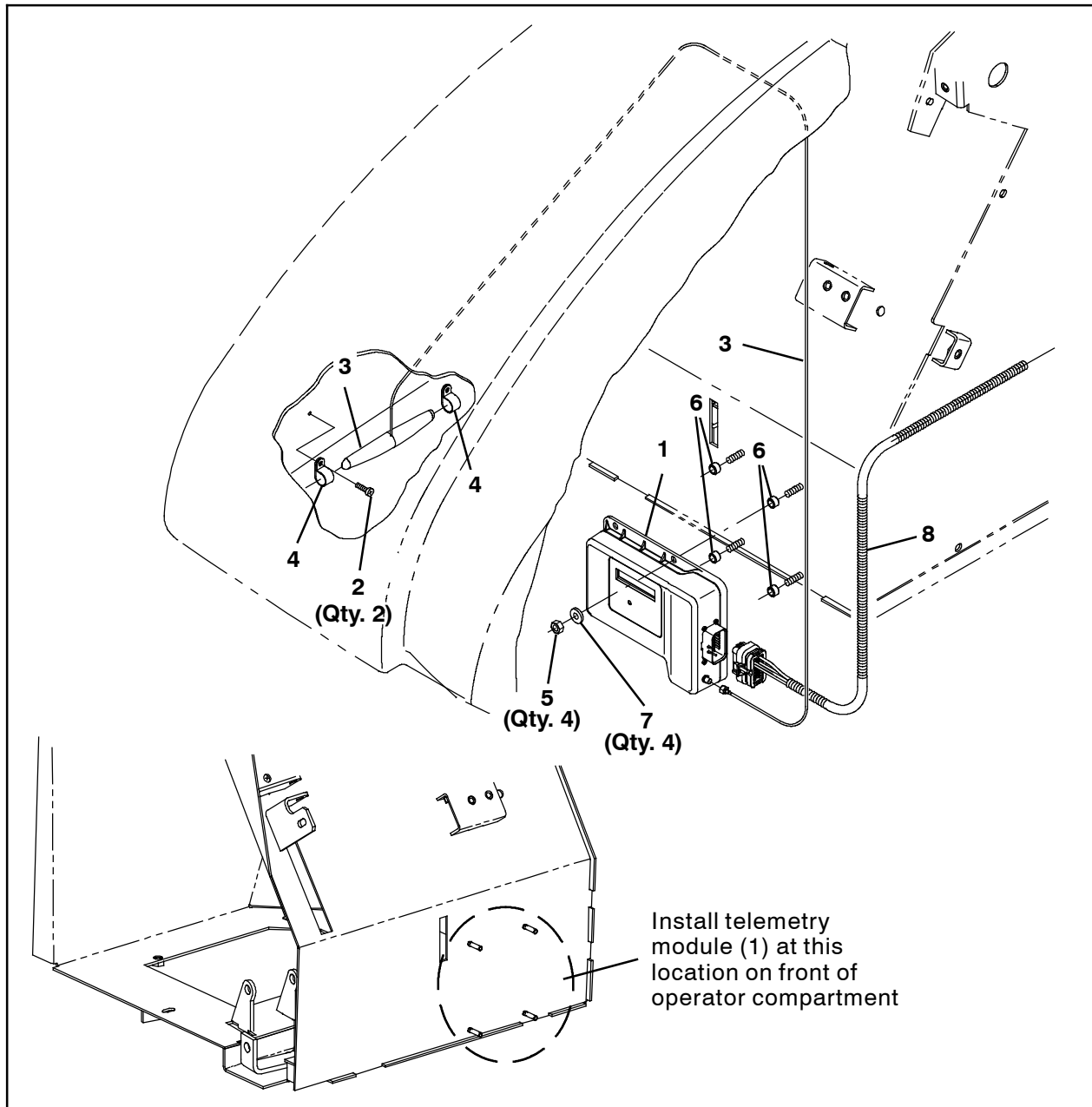


FIG. 1

1. Lift the hopper cover open and engage the support to support the cover open.
2. Drill two 1/8 in. (3.1750 mm) holes through the inner surface of the front shroud. **Do Not** drill into the front surface of the front shroud. (Fig. 1)
3. Use two pan screws (2) and two cable clamps (4) to install the antenna (3) onto the front shroud. (Fig. 1 / Fig. 2)

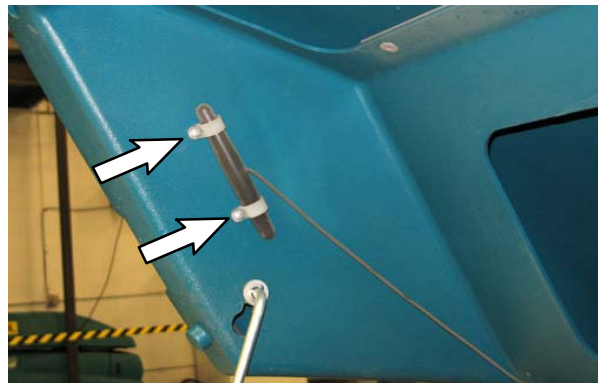


FIG. 2

4. Start the machine, completely raise the hopper, engage the hopper support bar, and turn off the machine.

WARNING: Raised hopper may fall. Engage hopper support bar.

5. Lift the main cover open and lock the main cover into the open position.
6. Disconnect the battery cable from the machine.

WARNING: Always disconnect battery cables from machine before working on electrical components.

7. Remove the additional SIM label from the back of the control box (1) and set label aside in a safe place. The number on the SIM label will be needed for activating the machine. (Fig. 3)



FIG. 3

8. Use four M6 hex nuts (5), four flat washers (7), and four sleeves (6) to install the telemetry module (1) onto the front of the operator compartment. (Fig. 1)
9. Connect the antenna (3) cable to the telemetry module (1). (Fig. 1)

10. Remove the fuse from the telemetry harness (8). (Fig. 4)



FIG. 4

11. Connect the telemetry harness (8) to the telemetry module (1). (Fig. 1 / Fig. 6)

12. Route the telemetry harness (8) to the electrical control box.

13. Remove the electrical cover from the electrical control box. Set the electrical cover and all removed hardware aside. (Fig. 5)

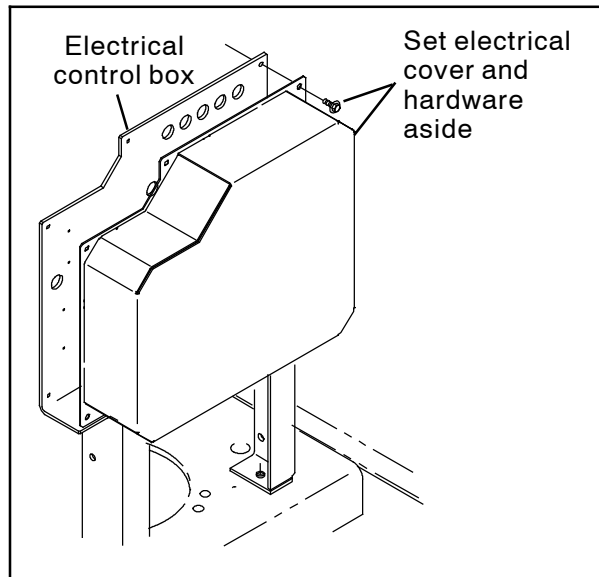


FIG. 5

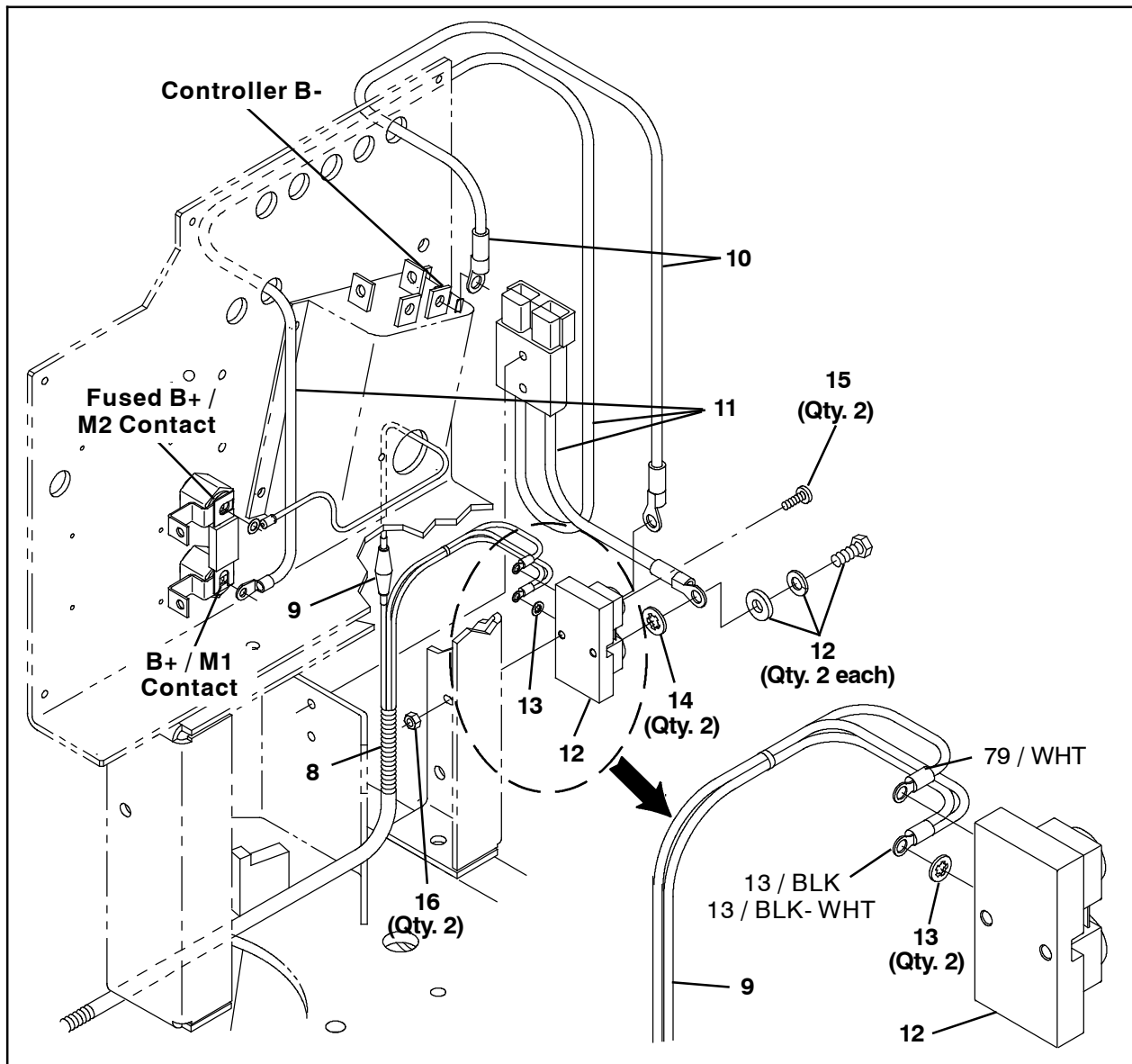


FIG. 6

14. Use two M5 pan screws (15) and two M5 hex nuts to install the shunt (12) onto the leg of the electrical control box. (Fig. 6)
15. Remove the battery cable attached to controller B- and the B+ stand off. Set the removed hardware aside. Discard the removed battery cable. (Fig. 6 / Fig. 9)
16. Use hardware included with the shunt (12) and one lock washer (14) to connect the battery cable (11) black cable to the shunt. (Fig. 6 / Fig. 10)
17. Route the battery cable (11) red cable through the back of the electrical control box, to the B+ stand off, and connect the red cable to the B+ stand off. (Fig. 6 / Fig. 9)
18. Use hardware included with the shunt (12) and one lock washer (14) to connect the black cable (10) to the shunt (12). (Fig. 6 / Fig. 10)
19. Route the black cable (10) through the back of the electrical control box (location B-), to the controller, and connect the black cable to the controller B- terminal. (Fig. 6 / Fig. 9)
20. Connect the telemetry harness (8) to the fused B+ M2 stand off. (Fig. 6 / Fig. 9 / Fig. 10)
21. Connect the telemetry harness (8) 13 / BLK 13 / BLK - WHT wire to the shunt (12). (Fig. 6 / Fig. 10)
22. Connect the telemetry harness (8) 79 / WHT wire to the shunt (12). (Fig. 6 / Fig. 10)

23. Use a cable tie (17) to secure the antenna (3) cable to the hopper cover and close the hopper cover. (Fig. 7)

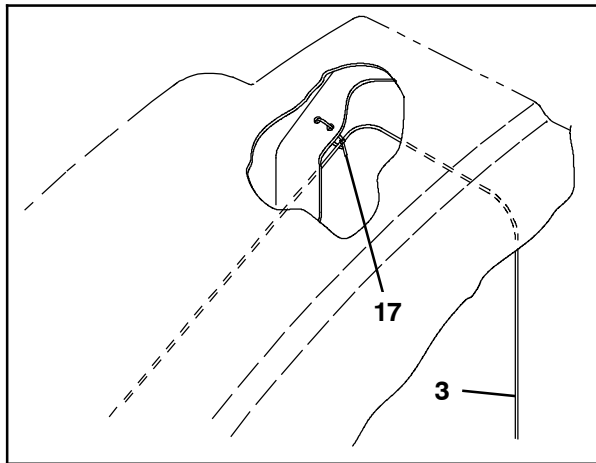


FIG. 7

24. Clean the area in the operator compartment where the telemetry label (18) is supposed to be located and install the telemetry label onto the operator compartment. (Fig. 8)



FIG. 8

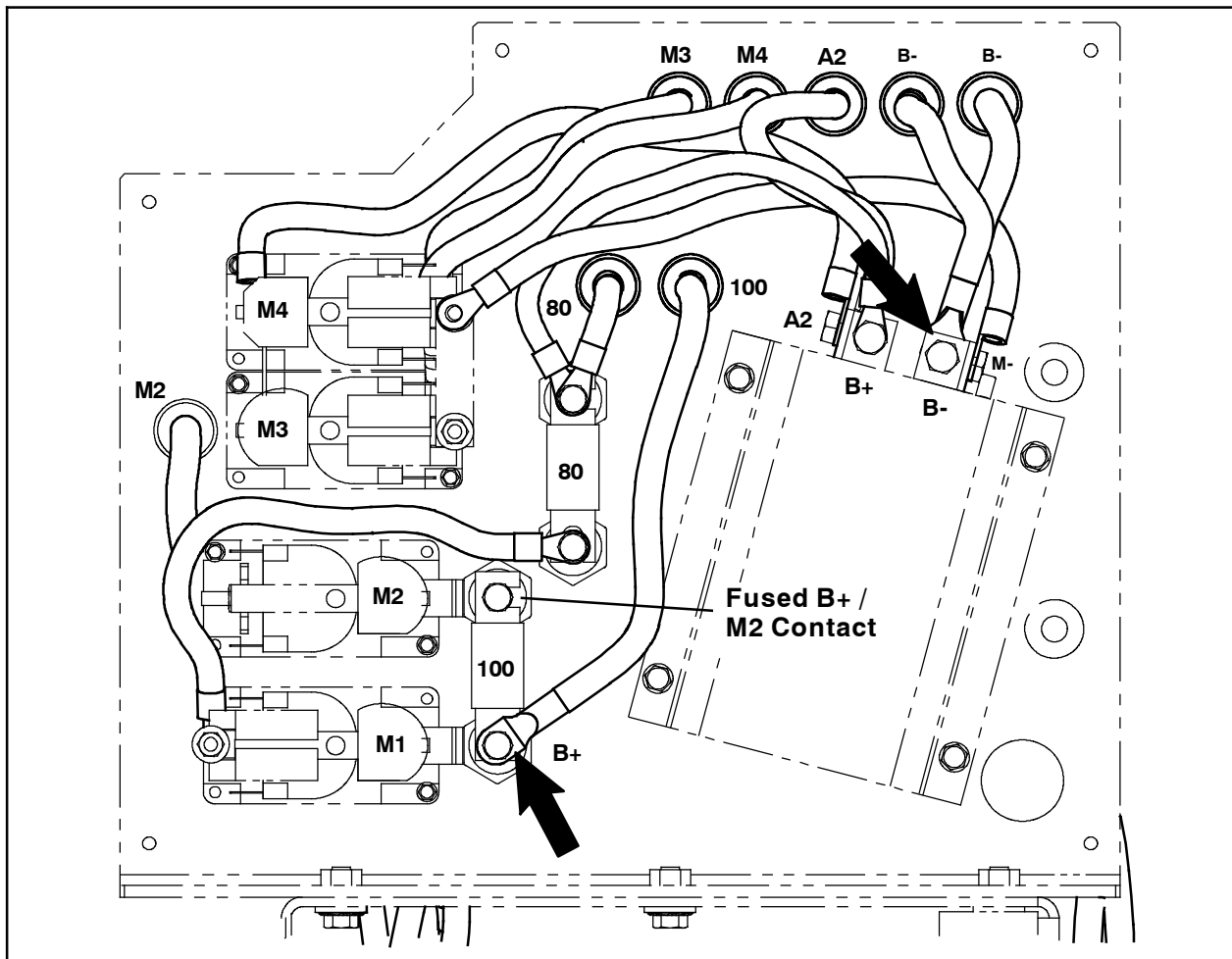


FIG. 9

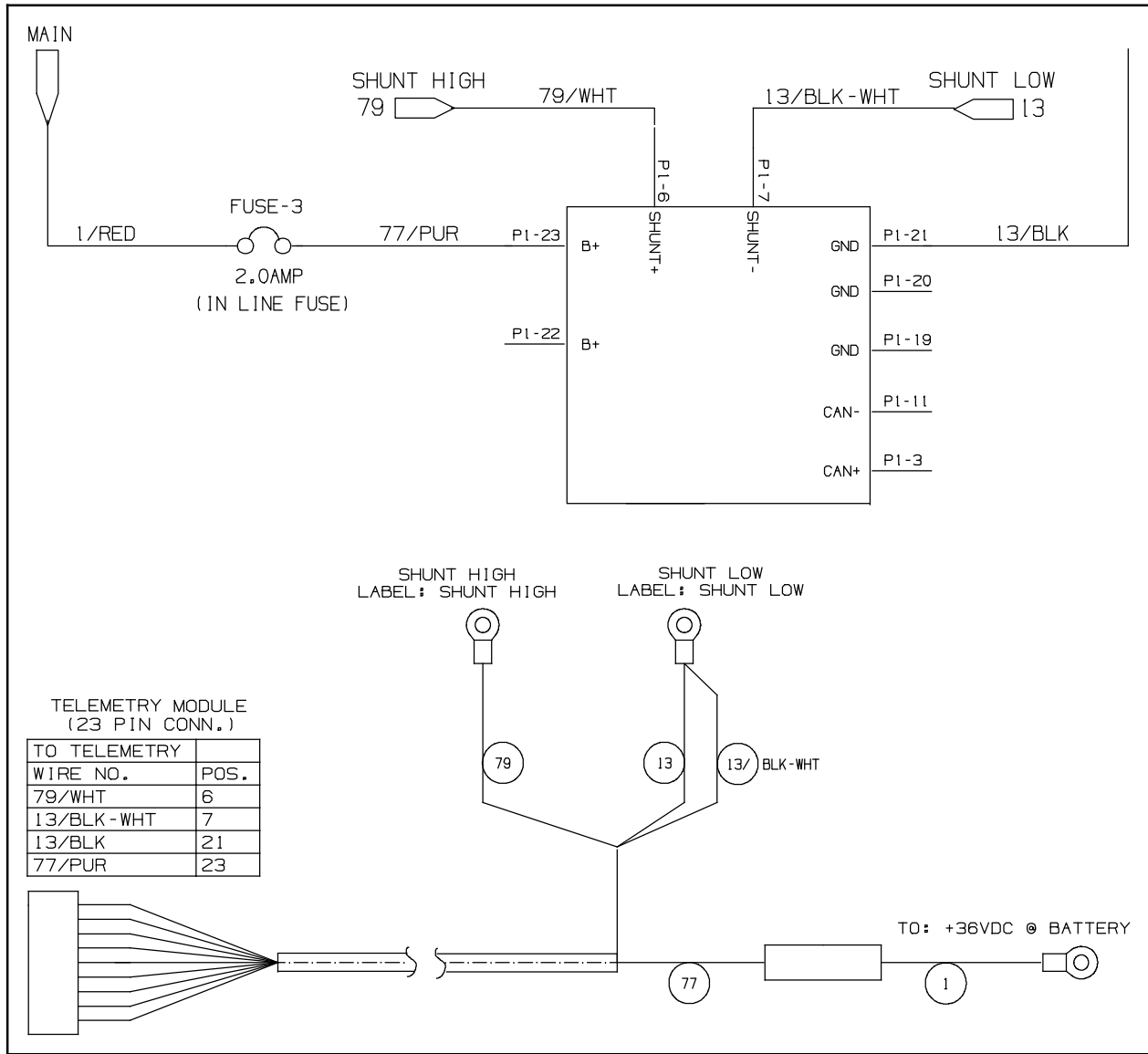


FIG. 10

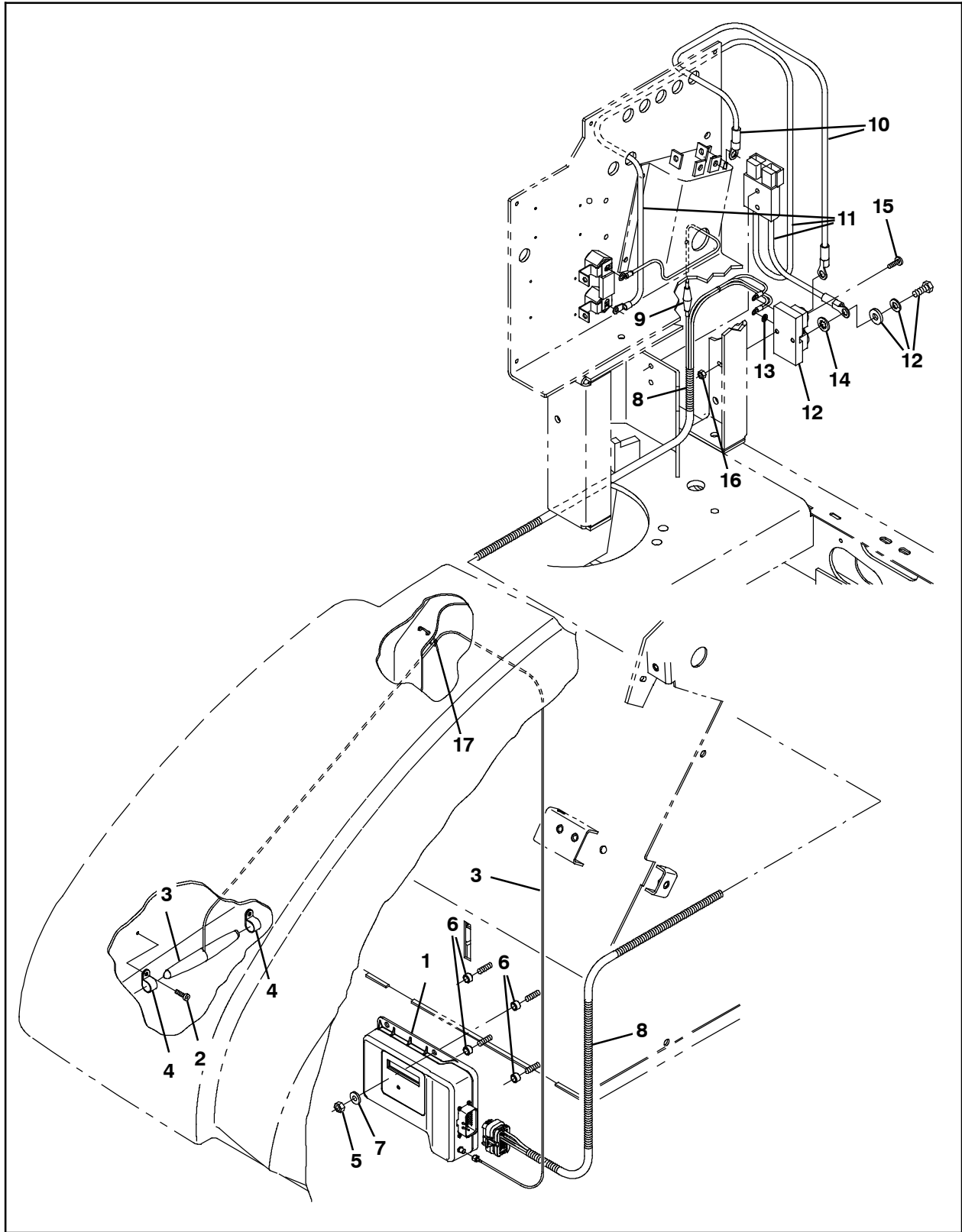


FIG. 11

25. Reinstall the fuse into the telemetry harness (8).
26. Reconnect the battery cable to the machine.
27. Start and test the machine.
28. **North America Customer Locations:**
 Activate the IRIS (telemetry module): Call Technical Support (between hours of 7:00 am and 5:00 pm CST) for assistance to activate the module. The IRIS telemetry system must be activated to complete this install. Have machine serial number and IRIS module SIM number ready when calling for activation.

29. **Australia Customer Locations:** Activate the IRIS (telemetry module): Call CCC (between hours of 8:00 am and 5:00 pm AEST) and ask to be routed to the IRIS expert for assistance to activate the module. The IRIS telemetry system must be activated to complete this install. Have machine serial number and IRIS module SIM number ready when calling for activation.

NOTE: The IRIS (telemetry module) must be activated to complete this installation. The module will not function until it is activated. Call for assistance activating the module after all telemetry components have been installed.

Bill Of Materials For Telemetry Kit, CI [S20E, USA] - 9014036

Ref.	Tennant Part No.	Description	Qty.	
1	1069467	Control Box Assy, Telem [USA, 3G]	1	
2	382320	Screw, Pan, Phl, 12- 16 X 0.50, F/ Plstc	2	
3	1070324	Antenna, Telem, 110 In [GPRS]	1	
4	140916	Clamp, Cable, Nyl, 0.62d, Nat	2	
5	08708	Nut, Hex, Lock, M6 X 1.00, NI	4	
6	222516	Sleeve, P/M, 0.32b 0.50d 0.3l [430SS]	4	
7	32483	Washer, Flat, 0.25, SAE	4	
▽	8	1071293	Harness, Ele [Telemetry, S20E]	1
▲	9	9009990	Vr, Fuse, 002a, 250vdc, Cartridge	1
10	1071294	Cable, 2ga, Blk [Telemetry, S20E]	1	
11	1071296	Cable Assy, 2ga [S20E - Telemetry]	1	
12	1070384	Shunt, 050mv 250a	1	
13	32980	Washer, Lock, Int, 10	2	
14	32988	Washer, Lock, Int, 0.38	2	
15	06935	Screw, Pan, Phl, M5 X 0.80 X 25, 4.8	2	
16	06549	Nut, Hex, Lock, M5 X 0.80, NI	2	
17	49266	Tie, Cable, Nyl, 07.3l .19w 1.8 Max D	1	
18	1069580	Label, Opertnl, Telem [FCC/IC]	1	

TENNANT COMPANY
 P. O. Box 1452
 Minneapolis, MN 55440-1452